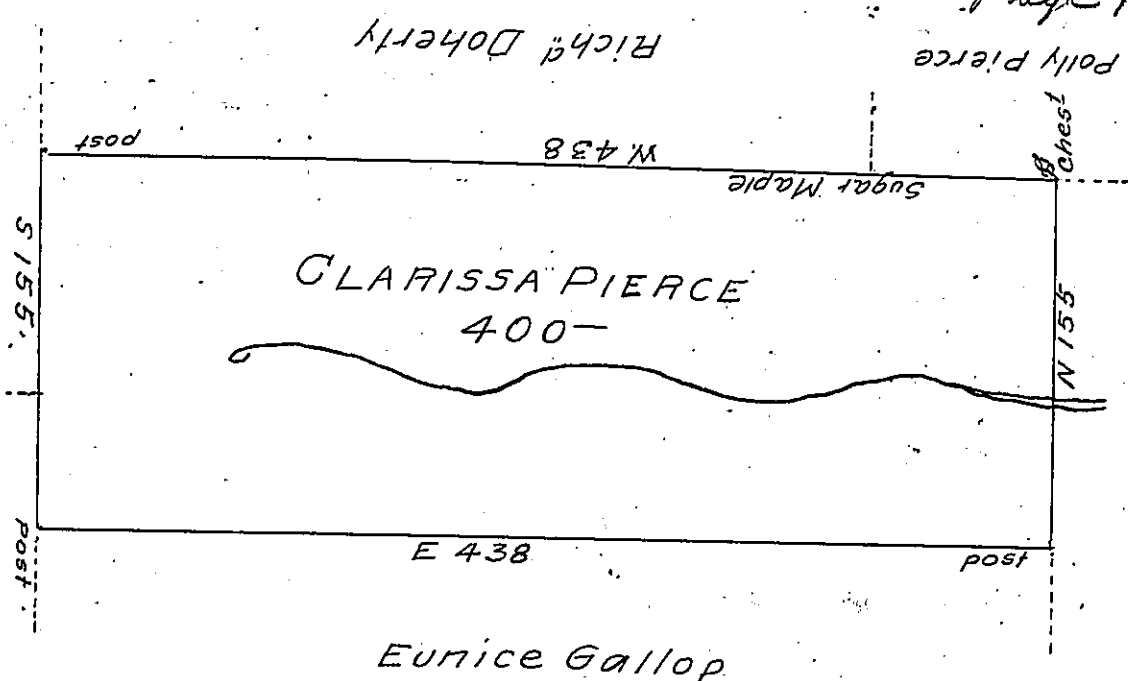


Page 164.

H-29-168.

Wm Palmer

E-21-1817.



Hannah Pierce

pg. 163.

By Virtue of a Warrant dated 28<sup>th</sup> Aug<sup>t</sup>. 1792 Surveyed the 10<sup>th</sup> day of November 1793 unto Clarissa Pierce the above described Tract of Four hundred acres of land and allowance situated on the Waters of Bowmans Creek in Luzerne County

By W<sup>m</sup> Montgomery D.S<sup>r</sup>

To Daniel Brodhead Esq<sup>r</sup>

Surv<sup>t</sup> Gen<sup>l</sup> of Pensylv<sup>a</sup>

IN TESTIMONY that the above is a copy of the original remaining on file in the Department of Internal Affairs of Pennsylvania, made conformably to an Act of Assembly approved the 16th day of February, 1833, I have hereunto set my Hand and caused the Seal of said Department to be affixed at Harrisburg, this first day of August 1906

*Geo P Brown*  
Secretary of Internal Affairs.